



aluminum & stainless steel flagpoles

- INTERNAL ●
- EXTERNAL ●
- GROUND SET ●
- WALL MOUNTED ●



**CANADIAN ARCHITECTURAL & ENGINEERED PRODUCTS**

Prospec Specialties manufactures complete line of Aluminum & Stainless Steel flagpoles. Fabricated utilizing only the best raw materials.

Our continuing commitment to design improvements, new concepts, materials, methods and applications has enabled us to set new industry standards. Experience and customer satisfaction over the years has gained for us an enviable reputation for high quality products.

bringing solutions...





### **Materials**

Each material has a specific application and satisfies a specific need/requirement, taking into account some factors such as weather conditions or aesthetic aspects.

### **Aluminum Flagpoles**

Aluminum Flagpoles are made of 6063-T6 grade alloy seamless tubing having a 30,000 lb/in<sup>2</sup> (21 kg/mm<sup>2</sup>) minimum yield strength complying with ASTM B-241 standards. At every 5'6" (1.7m) the rate of taper is 1" (25.4mm). Known for its high strength, low weight, easy maintenance and low cost. Aluminum Flagpole is available in painted, anodized, and satin brush finishes.

### **Stainless Steel Flagpoles**

Stainless Steel Flagpoles are made of 304/316 grade Alloys. At every 7.14' (2.2m) the rate of taper is 1" (25.4mm). Known for its highest strength and maintenance free capability. Stainless Steel Flagpole is available in satin brush (AISI #4) and mirror (AISI #8) finishes.

**Delivering right products  
at right price**

### 1. Satin Brush

A textured uni-directional finish produced by polishing the metal with a 120–180 grit belt or wheel then softening with an 80–120 grit greaseless compound or a medium non-woven abrasive belt or pad. This finish is commonly used in Stainless Steel, Aluminum, and Nickel.



### 2. Anodized

An electrochemical process that converts the metal surface into a decorative, durable, corrosion-resistant, anodic oxide finish. Aluminum is ideally suited to anodizing, although other nonferrous metals, such as magnesium and titanium, also can be anodized.



### 3. Organic Coating

Are chiefly additive type finishes that find use on almost all types of materials. They can be monolithic consisting simply of one layer, or coat, or they can be composed of two or more layers. Act as a protective barrier against corrosion and oxidation.



### 4. Statuary Antique

A bronze finish which is chemically oxidized and becomes a part of the material and has a high resistance to corrosion. To increase durability, seal with clear lacquer.



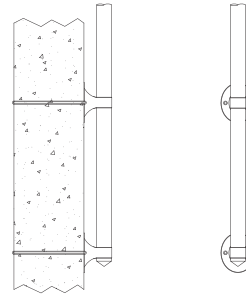
### 5. Galvanized

A process of coating iron, steel or aluminum with a layer of zinc by immersing the metal in a bath of molten zinc at a temperature of around 860 °F (460 °C). Galvanizing yields a durable silver-like finish that eliminates corrosion effectively. Galvanizing significantly lowers the maintenance costs associated with steel poles.



## Vertical Flagpoles

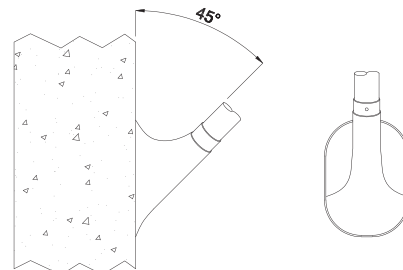
Vertical wall mounted flagpoles are suitable for up to 3 story high buildings. Standard fittings include finial (pinnacle) ball, cast aluminum truck, one set of #10 polypropylene halyard, two chrome plated bronze snap hooks, one aluminum cleat, and cast or fabricated aluminum wall brackets.



System Code	Total Height	Taper	Diameter		Space Bet. Brackets	Wall	Ball
			Butt	Top			
FPV05	16.4' (5.0m)	8' 3" (2.51m)	3" (76.2mm)	1-7/8" (47.6mm)	1' 6" (457mm)	0.125" (3.2mm)	3" (76.2mm)
FPV06	19.7' (6.0m)	8' 3" (2.51m)	4" (101.6mm)	1-7/8" (47.6mm)	2' 0" (610mm)	0.125" (3.2mm)	4" (101.6mm)
FPV08	26.2' (8.0m)	11' 0" (3.35m)	5" (127mm)	3-1/4" (82.6mm)	2' 6" (762mm)	0.188" (4.8mm)	5" (127mm)
FPV09	29.5' (9.0m)	11' 0" (3.35m)	5" (127mm)	3-1/4" (82.6mm)	3' 0" (914mm)	0.188" (4.8mm)	5" (127mm)
FPV11	36' (11.0m)	15' 0" (4.57m)	6" (152.4mm)	3-1/2" (88.9mm)	3' 6" (1067mm)	0.188" (4.8mm)	6" (152.4mm)

## Outrigger Flagpoles

Outrigger flagpoles are good for setting out above traffic corridors, usually installed over low rise buildings for aesthetic enhancement. Standard fittings include finial (pinnacle) ball, stationary truck, one halyard, two chrome plated bronze snap hooks, one cast aluminum cleat, and a cast or fabricated aluminum bracket.



System Code	Total Height	Diameter		Wall	Ball
		Butt	Top		
FPO02	6.6' (2.0m)	4" (102mm)	2-7/8" (73mm)	0.125" (3.2mm)	4" (102mm)
FPO03	9.8' (3.0m)	4" (102mm)	2-7/8" (73mm)	0.125" (3.2mm)	4" (102mm)
FPO04	13' (4.0m)	4" (102mm)	2-7/8" (73mm)	0.125" (3.2mm)	4" (102mm)
FPO05	16.4' (5.0m)	4" (102mm)	2-7/8" (73mm)	0.125" (3.2mm)	4" (102mm)

## Suggested Flag Sizes

Flagpole Height Imperial (Metric)	Maximum Flag Size Imperial (Metric)
20' (6.0m)	3'x5' (0.91m x 1.52m)
26' (8.0m)	5'x8' (1.52m x 2.44m)
33' (10.0m)	6'x10' (1.83m x 3.05m)
39' (12.0m)	8'x12' (2.44m x 3.66m)
49' (15.0m)	10'x15' (3.05m x 4.57m)
59' (18.0m)	12'x18' (3.66m x 5.49m)
66' (20.0m)	15'x25' (4.57m x 7.62m)

## Tapered Aluminum Flagpoles

System Code	Height Imperial (Metric)			Pole Parameter Imperial (Metric)					Foundation Parameter Imperial (Metric)			
	Total Height	Up Section Height	Under Section Height	Up Section Material	Under Section Material	Top Dia.	Bottom Dia.	Pole Plate	Base Plate	Hole	Anchor Bolts	
FPA08	26' (8.0m)	X	X	Φ6.5"x0.14" (Φ166 x 3.5mm)	X	3.35" (85.0mm)	6.5" (166mm)	Φ11.4"/ Φ9.4"/ 0.63" (Φ290/ Φ240/ 16)	Φ11.8"/ Φ9.4"/ 0.2" (Φ300/ Φ240/ 5)	Φ0.79"/ (Φ20mm)	(4-M20 x 800)	
FPA09	30' (9.0m)											
FPA10	33' (10.0m)											
FPA11	36' (11.0m)											
FPA12	39' (12.0m)											
FPA13	43' (13.0m)	13' (4.0m)	30'+1' (9.0+0.3m)	Φ5"x0.12" (Φ127 x 3.0mm)	Φ7.2"x0.16" (Φ183 x 4.1mm)	3.35" (85.0mm)	7.2" (183mm)	Φ12.2"/ Φ10.2"/ 0.7" (Φ310/ Φ260/ 18)	Φ12.6"/ Φ10.2"/ 0.2" (Φ320/ Φ260/ 5)	Φ0.79"/ (Φ20mm)	(6-M20 x 1000)	
FPA14	46' (14.0m)	16' (5.0m)	30'+1' (9.0+0.3m)									
FPA15	49' (15.0m)	20' (6.0m)	30'+1' (9.0+0.3m)									
FPA16	52' (16.0m)	23' (7.0m)	30'+1' (9.0+0.3m)									
FPA17	56' (17.0m)	26' (8.0m)	30'+1' (9.0+0.3m)									
FPA18	59' (18.0m)	25' (7.5m)	34'+1' (10.5+0.3m)	Φ6.2"x0.13" (Φ157 x 3.2mm)	Φ8.3"x0.2" (Φ210 x 5.0mm)	3.35" (85.0mm)	8.3" (210mm)	Φ13.4"/ Φ11.4"/ 0.8" (Φ340/ Φ290/ 20)	Φ13.8"/ Φ11.4"/ 0.2" (Φ350/ Φ290/ 5)	Φ0.79"/ (Φ20mm)	(6-M20 x 1200)	
FPA19	62' (19.0m)	28' (8.5m)	34'+1' (10.5+0.5m)									
FPA20	66' (20.0m)	31' (9.5m)	34'+1' (10.5+0.3m)									

## Tapered Stainless Steel Flagpoles (Grade: 304)

System Code	Height Imperial (Metric)			Pole Parameter Imperial (Metric)					Basic Parameter Imperial (Metric)	
	Total Height	Up Section Height	Under Section Height	Up Section Thickness	Bottom Section Thickness	Top Dia.	Bottom Dia.	Pole Plate	Base (Flange)	Embedded Parts
FPS06	20' (6.0m)	X	X	0.1" (2.5mm)	0.12" (3.0mm)	3.15" (80mm)	5.5" (140mm)	X	10.6"X10.6"X0.39" (270X270X10mm)	4-M18
FPS07	23' (7.0m)	X	X	0.1" (2.5mm)	0.12" (3.0mm)	3.15" (80mm)	5.9" (150mm)	X	10.6"X10.6"X0.39" (270X270X10mm)	4-M18
FPS08	26" (8.0m)	X	X	0.12" (3.0mm)	0.12" (3.0mm)	3.15" (80mm)	6.3" (160mm)	X	10.6"X10.6"X0.47" (270X270X12mm)	4-M18
FPS09	30" (9.0m)	X	X	0.12" (3.0mm)	0.12" (3.0mm)	3.15" (80mm)	6.7" (170mm)	X	10.6"X10.6"X0.47" (270X270X12mm)	4-M18
FPS10	33" (10.0m)	X	X	0.12" (3.0mm)	0.12" (3.0mm)	3.15" (80mm)	7.1" (180mm)	X	13"X13"X0.55" (330X330X14mm)	4-M20
FPS11	36" (11.0m)	X	X	0.12" (3.0mm)	0.12" (3.0mm)	3.15" (80mm)	7.5" (190mm)	X	13"X13"X0.55" (330X330X14mm)	4-M20
FPS12	39" (12.0m)	X	X	0.12" (3.0mm)	0.12" (3.0mm)	3.15" (80mm)	7.9" (200mm)	X	13"X13"X0.55" (330X330X14mm)	4-M20
FPS13	43" (13.0m)	X	X	0.12" (3.0mm)	0.12" (3.0mm)	3.15" (80mm)	8.3" (210mm)	X	13"X13"X0.55" (330X330X14mm)	4-M22
FPS14	46" (14.0m)	X	X	0.12" (3.0mm)	0.12" (3.0mm)	3.15" (80mm)	8.7" (220mm)	X	13"X13"X0.55" (330X330X14mm)	4-M22
FPS15	49" (15.0m)	X	X	0.16" (4.0mm)	0.12" (3.0mm)	3.15" (80mm)	9.1" (230mm)	X	13"X13"X0.55" (330X330X14mm)	4-M22
FPS16	52" (16.0m)	X	X	0.16" (4.0mm)	0.12" (3.0mm)	3.15" (80mm)	9.4" (240mm)	X	13"X13"X0.55" (330X330X14mm)	4-M22
FPS17	56" (17.0m)	X	X	0.16" (4.0mm)	0.12" (3.0mm)	3.15" (80mm)	9.8" (250mm)	X	13"X13"X0.55" (330X330X14mm)	4-M22
FPS18	59" (18.0m)	X	X	0.16" (4.0mm)	0.12" (3.0mm)	3.15" (80mm)	10.2" (260mm)	X	13"X13"X0.55" (330X330X14mm)	4-M22

Note: For the height of more than 12 meters, it can be shipped in sections together with the self-aligning sleeve which requires Argon Arc welding.



**PROSPEC SPECIALTIES INC.**

**OPERATIONS OFFICE:**

UNIT 26, 5250 SATELLITE DRIVE, MISSISSAUGA,  
ONTARIO, L4W 5G5, CANADA. Tel: (905) 602-1525

**CORPORATE OFFICE:**

3601 HIGHWAY 7, SUITE 400, MARKHAM  
ONTARIO, L3R 0M3 CANADA  
Tel: (888) 749-8456 Fax: (888) 749-8455  
Email: [info@prospecspecialties.com](mailto:info@prospecspecialties.com)  
[www.prospecspecialties.com](http://www.prospecspecialties.com)