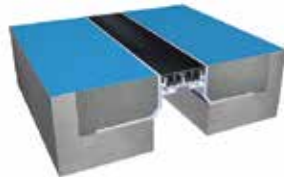


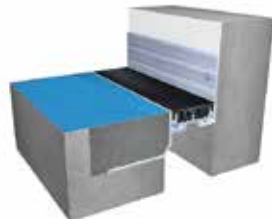
Features

- System designed for installation in concrete recess
- Firmly fixed Santoprene gasket ideal for movement tractability without shearing or breaking
- System suitable for minor seismic movements
- Commonly used system that is easy to install and maintain
- System available with Brass Top (BT), Stainless Steel Top (ST), Brass Cap (BC), Steel Cap (SC) and Brass Insert (BI)
- No bump structure is ADA compliant
- Allows narrow shear movement
- Suitable for heavy pedestrian traffic and hand trolley loads
- Vapor and Fire Barriers are optionally available

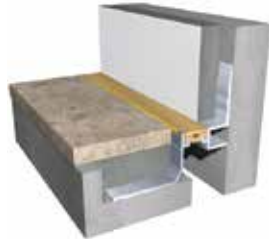
Straight Application AAS



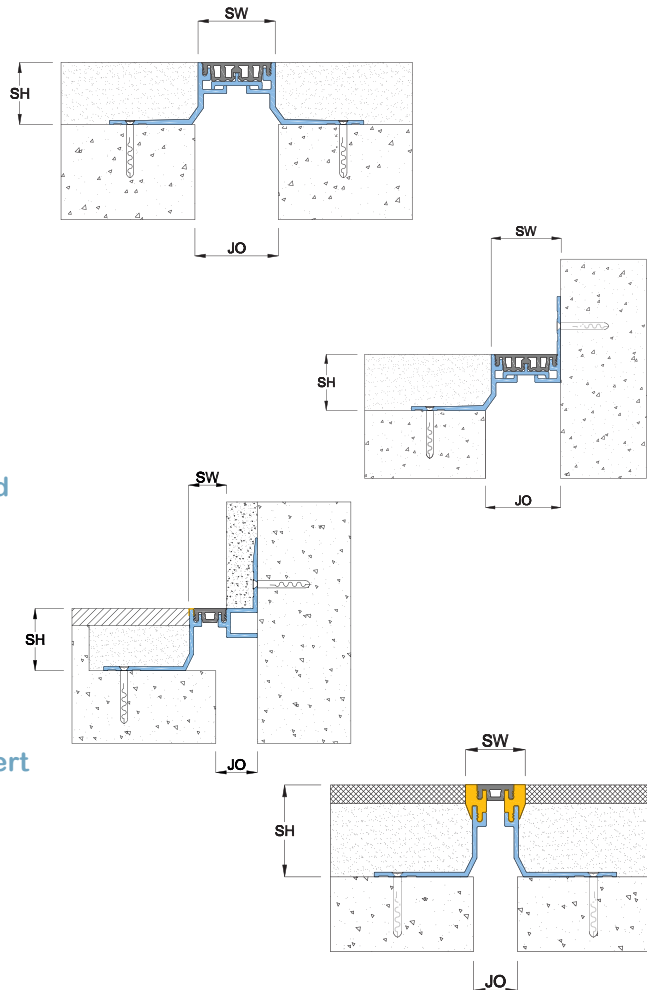
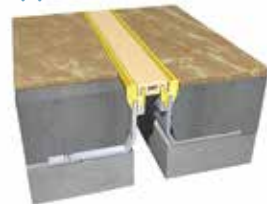
Corner Application AAC



Corner Application AAC Recessed



Straight Application AAS Brass Insert



- AA Series
- INT. Application
- Thermal Movement
- FLOOR USE

Details

Usage : Internal Floor

Joint width : 1" - 3"

Optional : Vapor/Fire Barrier
Brass/SS caps
Recessed wall frame

Application	Code	JO	SH	SW	± Movement (%)			Load (Ton)
					Millimeter			
					Horizontal	Vertical	Shear	
Straight (S)	AAS 01	25	38	25	25	25	Narrow	3
	AAS 1.5	38	38	38	25	25	Narrow	3
	AAS 02	51	50	47	25	25	Narrow	2
	AAS 03	76	50	73	25	25	Narrow	2
Corner (C)	AAC 01	25	38	25	25	25	Narrow	3
	AAC 1.5	38	38	38	25	25	Narrow	3
	AAC 02	51	50	47	25	25	Narrow	2
	AAC 03	76	50	73	25	25	Narrow	2

As Prospec Specialties' policy is one of continual progress for the improvement of the company's services to its customers, the company reserves the right to modify the applications of its products without notice.