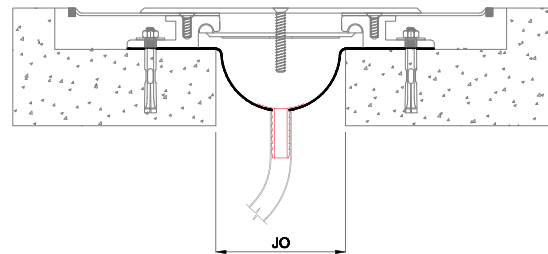
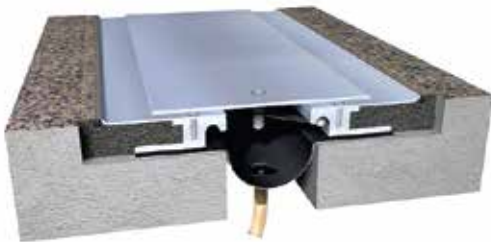


Features

- System designed for thermal & seismic movements
- EPDM membrane having long life cycle and does not require maintenance once properly installed
- Easy to install under the slab or in blockout
- Very cost effective
- Supplied in 33' (10 LM) rolls for seamless installation
- Best in its category

Floor Installation



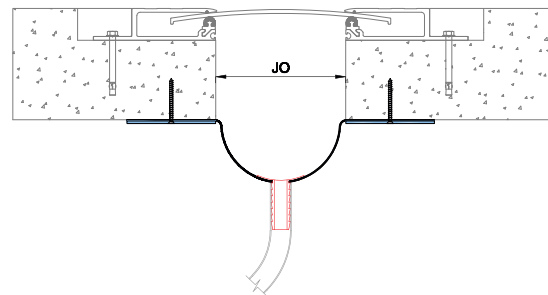
WG Series

FLOOR USE

UNDER-SLAB USE

WATER

Under-Slab Installation



Details

Usage : Floor/Under-Slab

Joint width : 2" - 12"

Application	Code	JO	SH	SW	± Movement (%)			Load (Ton)
					Millimeter		Horizontal	
Straight & Corner Application	WGS 02	51	*	*	*	*	*	*
	WGS 03	76	*	*	*	*	*	*
	WGS 04	102	*	*	*	*	*	*
	WGS 06	152	*	*	*	*	*	*
	WGS 08	203	*	*	*	*	*	*
	WGS 10	254	*	*	*	*	*	*
WGS 12	305	*	*	*	*	*	*	

As Prospec Specialties' policy is one of continual progress for the improvement of the company's services to its customers, the company reserves the right to modify the specifications of its products without notice.