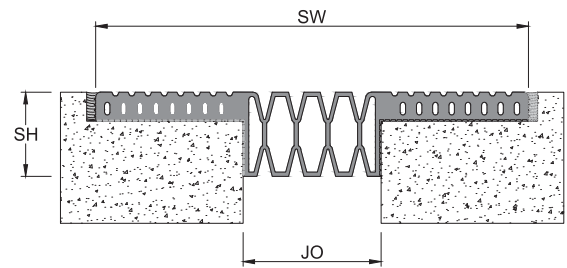
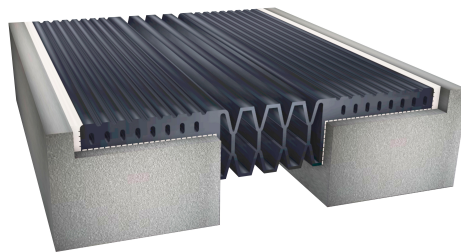


## Features

- System designed for external/internal floors
- Santoprene/Neoprene/EPDM Seal for parking decks
- Provides excellent impermeability
- Excellent for seamless installation in curves and radius
- For smooth vehicular/pedestrian movement, install leveled to floor
- UV stabilized
- System allows full seismic movements
- System allows excellent shear movements

### Straight Application KFS



**KF**  
Series

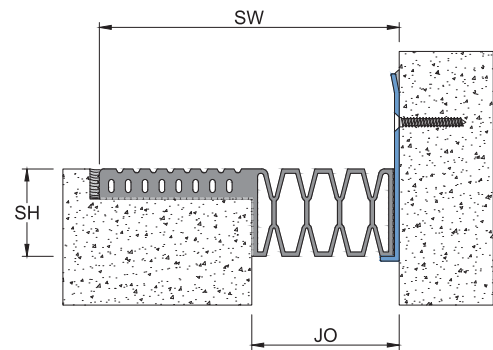
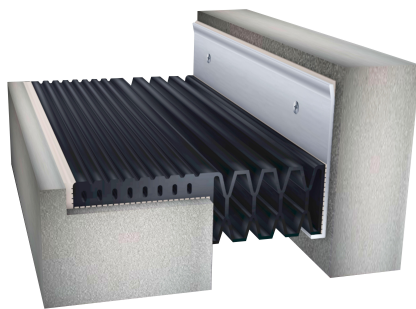
**EXT.**  
Application

**INT.**  
Application

**Thermal**  
Movement

**FLOOR**  
USE

### Corner Application KFC



## Details

Usage : Floor

Joint width : 1" - 4"

Optional : Fire Barrier

Application	Code	JO	SH	SW	± Movement (%)			Load (Ton)
					Millimeter			
					Horizontal	Vertical	Shear	
Straight (S)	KFS 01	25	46	188	50	50	Excellent	*
	KFS 02	51	46	214	50	50	Excellent	*
	KFS 03	76	46	239	50	50	Excellent	*
	KFS 04	102	46	264	50	50	Excellent	*
Corner (C)	KFC 01	25	46	107	50	50	Excellent	*
	KFC 02	51	46	132	50	50	Excellent	*
	KFC 03	76	46	158	50	50	Excellent	*
	KFC 04	102	46	183	50	50	Excellent	*

As Prospec Specialties' policy is one of continual progress for the improvement of the company's services to its customers, the company reserves the right to modify the specifications of its products without notice.