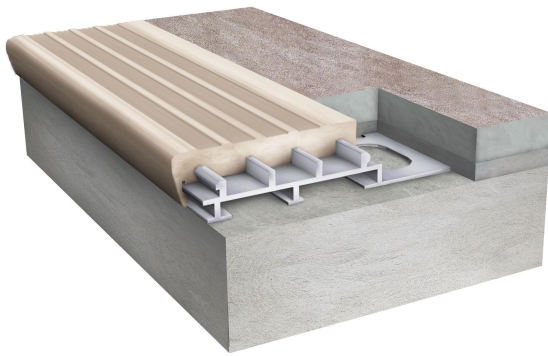
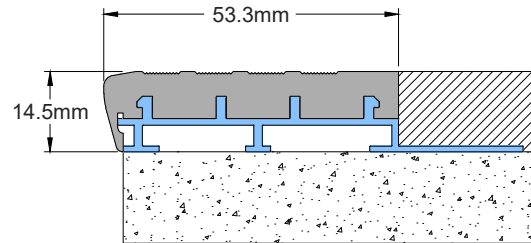


Features

- System designed for indoor application
- Double component nosing
- Easy installation & maintenance
- 2"(53.3mm) tread area
- 5/8"(14.5mm) riser area
- Standard profile length 10'(3 meters)
- Factory cut & drilled option available
- Made of construction grade aluminum alloy 6063 T6
- Suitable for ceramic/porcelain tiles
- Available in 4 standard PVC colours
- Custom colors available, MOQ applies



SNM 02



Team Uniforms & Custom Apparel

Color Options:



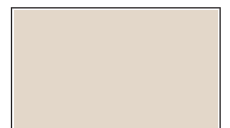
BK



GY



WH



BG

Special Note: Customer is encouraged to locally source anchors and construction grade external adhesive for fixing because the local conditions vary from country to country