

ZBS Series

NOTE: Read through all instructions prior to installation. All material must be inspected for damage. Any damage must be reported to PROSPEC SPECIALTIES INC., as soon as possible. All work must be completed as per Architect's approval of material and shop drawings and installation must commence in accordance with these installation instructions.

Packaging:

ZBS Series Fire Barrier comes in 2 parts:

- A.) Preformed, semi-rigid, non-combustible mineral wool.
- B.) Primerless, single component, self-levelling silicone sealant. (10 oz, 20 oz, 28 oz, 2.63 gal, 4.5 gal)

Storage:

ZBS Series Fire Barrier supplied on pallets with shrink-wrapping protection. Material should be stored in clean, dry and temperature controlled area.

Surface Preparation:

Verify that the structural gap is in conformance with submittal data before beginning installation. Substrate should be clean, clear, dry and free from grit. Remove dust with air compressor.

Safety Precaution:

Wear gloves, dust mask, eye protection, knee caps when handling, cutting and installing fire Barrier. Review all MSDS before commencing the installation.

Material Coverage:

Structural Gap Width	Mineral Wool Width
1" (25mm)	2" (50mm)
2" (51mm)	4" (100mm)
3" (76mm)	6" (150mm)
4" (102mm)	8" (200mm)
5" (127mm)	10" (250mm)
6" (152mm)	12" (300mm)

Installation Procedure:

Step 1: (Mineral Wool)

Having selected a suitable ZBS mineral wool it is simply installed by compressing 50% by hand and pressing it into the installation gap. Leave a recess (depth varies depends on what type of joint system to be cover over the fire barrier) from the top of the surface of the blockout.

Junctions between mineral wool lengths may be formed by applying a layer of silicone sealant and overlapping the fire barriers at either side.

Step 2: (Silicone Sealant)

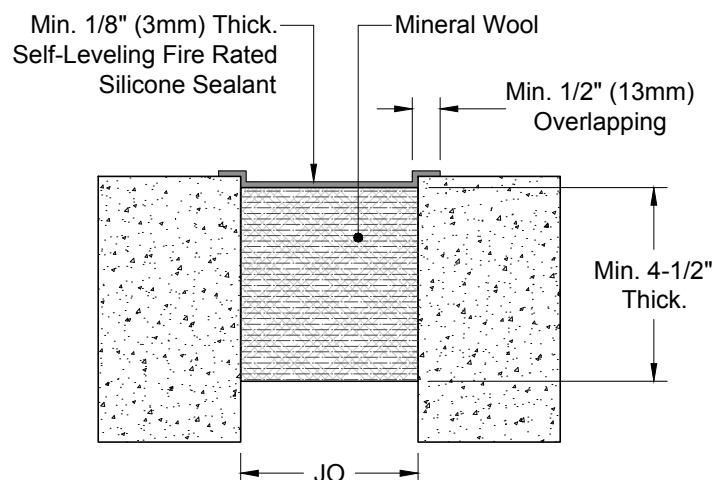
Apply a minimum 1/8" (3mm wet) thickness Hilti CFS-SP WB firestop joint spray flush with top surface of floor to completely cover mineral wool, overlapping min. 1/2" (13mm). Make sure the sealant bonds with both sides of the structural gap forming watertight setting.

Notes:

1. Maximum width of joint = 8".
2. T-Rating may not equal F-Rating in accordance with UL 2079.

For vertical joints, it is recommended to order in 850 ml gun grade silicone cartridges/sausages.

Sectional Diagram:



Protection & Cleaning:

Installation of ZBS Fire Barrier is now complete. Clean the adjacent surfaces immediately. Cover the installed area with 3mm plyboard as sealant is still uncured. The curing time is 48 hours at 25°C.

Install PROSPEC SPECIALTIES expansion joint cover over the fire barrier as per installation instructions.

