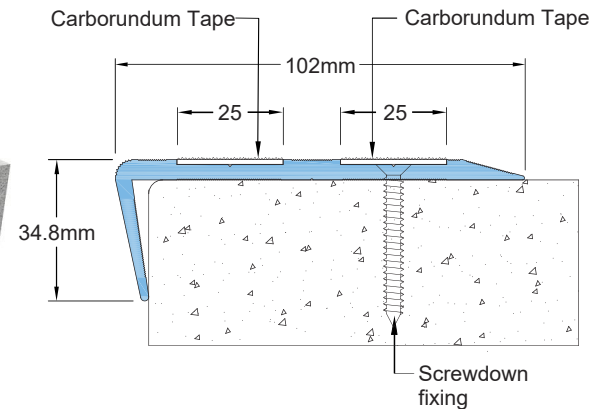
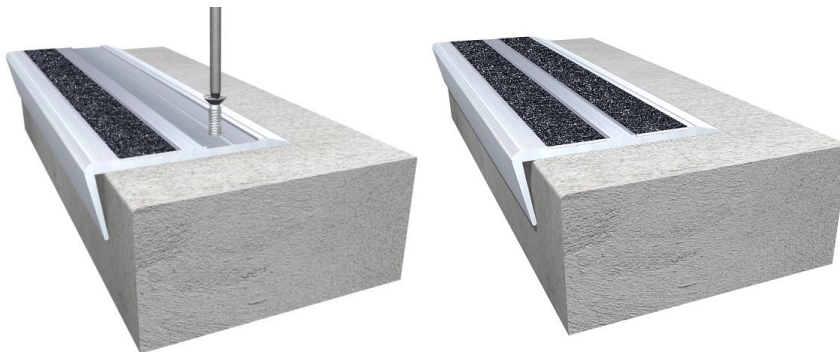


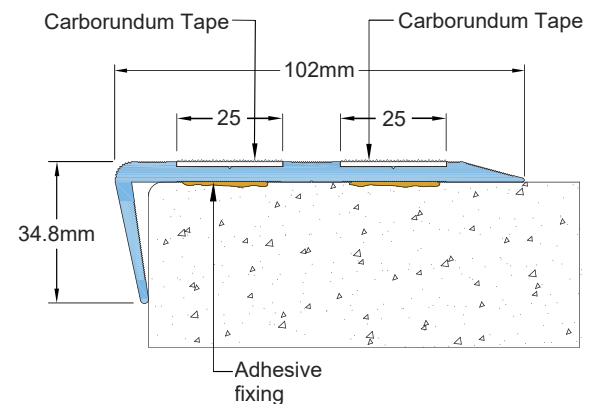
Features

- System designed for indoor / outdoor application
- Double component nosing
- Heavy nosing design and wider nosing footprint makes this product most desirable for medium to heavy duty applications
- 2 numbers of 1" (25mm) wide non-slip carborundum self-adhesive tapes installed for rapid response
- Retrofit design for easy installation
- Easy installation & maintenance
- 4" (102mm) tread area
- 1-9/25" (34.8mm) riser area
- Standard profile length 10'(3 meters)
- Factory cut & drilled option available
- Suitable for dry / wet anchoring
- Made of construction grade aluminum alloy 6063 T6

SNE 04 Screwdown Fixing



SNE 04 Adhesive Fixing



Color Options:



MILL FINISH



SILVER ANODIZED



TITANIUM FINISH



BRONZE FINISH

Special Note: Customer is encouraged to locally source anchors and construction grade external adhesive for fixing because the local conditions vary from country to country