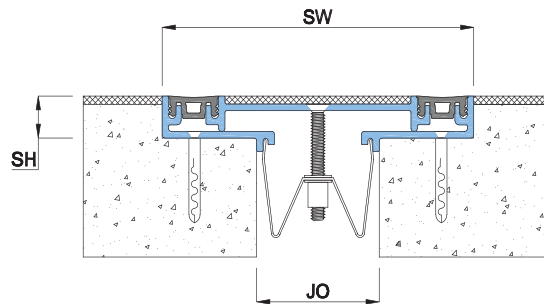
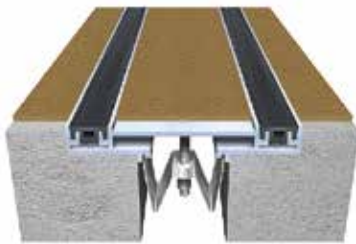


## Features

- System designed to be installed in recessed floor
- Installation is recommended for PVC / VCT / LVT/ Rubber floor finishes
- Stainless Steel central spring clips / flanges allows swift shift between positive and negative movements
- Firmly fixed Santoprene gasket offer ideal movement tractability without shearing or breaking
- No bump structure is ADA compliant
- System is suitable for minor seismic movements
- Allows minor shear movement
- Suitable for heavy pedestrian traffic and trollies
- Vapor and Fire Barriers are optionally available

### Straight Application BVS

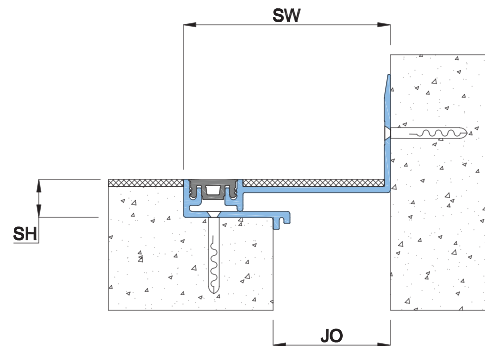
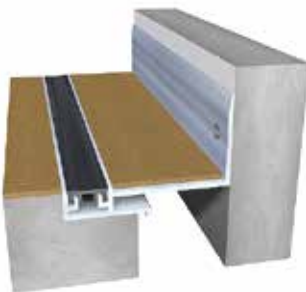


Seal Colors:



- BV Series
- INT. Application
- Thermal Movement
- FLOOR USE
- WALL USE

### Corner Application BVC



## Details

Usage : Internal Floor/Wall

Joint width : 2"- 8"

Optional : Vapor/Fire Barrier

Application	Code	JO	SH	SW	± Movement (%)			Load (Ton)
					Millimeter		Horizontal	
Straight (S)	BVS 02	51	16	125	25	25	Minor	3
	BVS 04	102	16	240	25	25	Minor	2
	BVS 06	152	16	290	16	16	Minor	1
	BVS 08	203	16	340	12	12	Minor	1
Corner (C)	BVC 02	51	16	90	12.5	12.5	Minor	3
	BVC 04	102	16	170	12.5	12.5	Minor	2
	BVC 06	152	16	220	8.5	8.5	Minor	1
	BVC 08	203	16	270	6	6	Minor	1

As Prospec Specialties' policy is one of continual progress for the improvement of the company's services to its customers, the company reserves the right to modify the specifications of its products without notice.