



'**Strong**' mats are manufactured using polypropylene yarn, knotted and embedded into a water resistant gel backing. 2 rows of side-by-side ridge design is effective in cleaning shoe soles, remove moisture, salt residue, dirt and debris, keeping the floors dirt-free for longer periods of time.

'**Strong**' comes in 3.28' (1000mm) & 6.56' (2000mm) wide X 82' (25mm) long.

'**Strong**' does not fade, shed fibers, rot or smell when wet. This product is available in 6 colors to match your interiors.

'**Strong**' can be used as an entrance door mats or used it like loose area rugs. For best results, cover the entire entrance area with '**Strong**' mat from wall to wall.

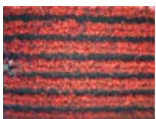
'**Strong**' comes with edge beading as an option. Edge beading and Gel backing of this mats help reduce movement, especially on hard surfaces.

'**Strong**' is recommended for moderate to heavy traffic and is easy to clean with vacuum or steam extraction.

'**Strong**' is highly effective on Snow, Salt, Moisture and Sand.

Sample Specification: Provide 2/5" (10mm) thick approx., polypropylene yarn with gel backing mat, model '**Strong**' by Prospec Specialties.

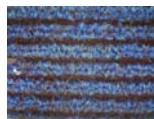
Color Options:



RED (RD)



BROWN (BN)



BLUE (BL)



BEIGE (BG)



GREY (GY)



ANTHRACITE (AN)

Key Properties:



INTERNAL



CLOSED



MUD



EASY TO
MAINTAIN



QUIET



MOISTURE
REMOVAL



AESTHETIC